

This article was downloaded by:

On: 15 January 2011

Access details: *Access Details: Free Access*

Publisher *Taylor & Francis*

Informa Ltd Registered in England and Wales Registered Number: 1072954 Registered office: Mortimer House, 37-41 Mortimer Street, London W1T 3JH, UK



Journal of Experimental Nanoscience

Publication details, including instructions for authors and subscription information:

<http://www.informaworld.com/smpp/title~content=t716100757>

NO₂ and humidity sensing characteristics of few-layer graphenes

Anupama Ghosh^{ab}; Dattatray J. Late^a; L. S. Panchakarla^a; A. Govindaraj^{ab}; C. N. R. Rao^{ab}

^a Chemistry and Physics of Materials Unit and International Centre for Material Science, Jawaharlal Nehru Centre for Advanced Scientific Research, Jakkur P.O., Bangalore 560064, India ^b Solid State and Structural Chemistry Unit, Indian Institute of Science, Bangalore 560012, India

To cite this Article Ghosh, Anupama , Late, Dattatray J. , Panchakarla, L. S. , Govindaraj, A. and Rao, C. N. R.(2009) 'NO₂ and humidity sensing characteristics of few-layer graphenes', Journal of Experimental Nanoscience, 4: 4, 313 – 322

To link to this Article: DOI: 10.1080/17458080903115379

URL: <http://dx.doi.org/10.1080/17458080903115379>

PLEASE SCROLL DOWN FOR ARTICLE

Full terms and conditions of use: <http://www.informaworld.com/terms-and-conditions-of-access.pdf>

This article may be used for research, teaching and private study purposes. Any substantial or systematic reproduction, re-distribution, re-selling, loan or sub-licensing, systematic supply or distribution in any form to anyone is expressly forbidden.

The publisher does not give any warranty express or implied or make any representation that the contents will be complete or accurate or up to date. The accuracy of any instructions, formulae and drug doses should be independently verified with primary sources. The publisher shall not be liable for any loss, actions, claims, proceedings, demand or costs or damages whatsoever or howsoever caused arising directly or indirectly in connection with or arising out of the use of this material.

NO₂ and humidity sensing characteristics of few-layer graphenes

Anupama Ghosh^{ab}, Dattatray J. Late^a, L.S. Panchakarla^a,
A. Govindaraj^{ab} and C.N.R. Rao^{ab*}

^aChemistry and Physics of Materials Unit and International Centre for Material Science,
Jawaharlal Nehru Centre for Advanced Scientific Research, Jakkur P.O., Bangalore 560064, India;

^bSolid State and Structural Chemistry Unit, Indian Institute of Science, Bangalore 560012, India

(Received 2 March 2009; final version received 13 June 2009)

Sensing characteristics of few-layer graphenes for NO₂ and humidity have been investigated with graphene samples prepared by the thermal exfoliation of graphitic oxide, conversion of nanodiamond (DG) and arc-discharge of graphite in hydrogen (HG). The sensitivity for NO₂ is found to be highest with DG. Nitrogen-doped HG (n-type) shows increased sensitivity for NO₂ compared with pure HG. The highest sensitivity for humidity is observed with HG. Sensing characteristics of graphene have been examined for different aliphatic alcohols and the sensitivity is found to vary with the chain length and branching.

Keywords: gas sensor; NO₂ sensor; humidity sensor; graphene

1. Introduction

Gas sensor characteristics of various nanostructures have been investigated in the past few years [1–3]. Thus, many metal oxide nanostructures show good sensing characteristics for gases, such as NO₂, NH₃, hydrocarbons and ethanol [1–10]. Carbon nanotubes (CNTs) are known to exhibit fast response and high sensitivity for detection of small concentrations of toxic gases at room temperature. Semiconducting CNTs can be used for detecting a very small concentration of NH₃, NO₂ and other gases [11–15]. Graphene is a new nanocarbon with a two-dimensional structure containing sp² carbon network. Single layer graphene comprising a sheet of the sp² carbon network is of primary interest; however graphenes with more than one layer have also been investigated in recent months. If the number of layers is more than 10, the properties become similar to those of bulk graphite. Single layer graphene is a gapless semiconductor, but with the increase in the number of layers the gap opens up, affecting the electronic properties. Recent studies on the interaction of graphene with gas molecules have indicated that it can act as a good sensor [16–24].

Schedin et al. [22] have shown that the increase in the charge carrier concentration induced by gas molecules adsorbed on the surface of graphene can be used to fabricate

*Corresponding author. Email: cnrrao@jncasr.ac.in

sensitive gas sensors. On the basis of theoretical investigations on the adsorption of gas molecules on single layer graphene as well as on graphene nanoribbons, it has been predicted that the doping in carbon nanostructures may improve the sensitivity [25–28]. Ao et al. have applied density functional theory to show that aluminium doped graphene can be used as a good detector for carbon monoxide [29]. Functionalised graphite nanostructures are able to sense traces of pollutant gases such as NO₂ [30]. Water vapour sensing characteristics of reduced graphene oxides have been reported [31]. Reduced graphene oxide is also shown to be a good sensor for toxic vapours [32]. Spin-coated hydrazine-functionalised graphene dispersions are able to detect NO₂, NH₃ and 2,4-dinitrotoluene [33].

We considered it important to examine the gas sensing characteristics of few-layer graphenes prepared by different methods. For this purpose, we have prepared graphene by the thermal exfoliation of graphitic oxide (EG), conversion of nanodiamond (DG) and by arcing graphite rods in a hydrogen atmosphere (HG) [34–37]. We have also prepared nitrogen- and boron-doped graphene samples (N-HG and B-HG) to study the effect of doping on the gas sensing characteristics. We have studied sensing of NO₂ and humidity by all the above graphene samples. We have also examined the sensing characteristics of EG for different aliphatic alcohols.

2. Experimental technique

Graphene was prepared by four different methods, namely the EG, DG and arc-discharge of graphite in HG. To prepare EG, graphitic oxide was prepared by reacting graphite powder with a mixture of concentrated nitric acid and sulphuric acid with potassium chlorate at room temperature for 5 days and the thermal EG was carried out in a long quartz tube at 1050°C under an argon atmosphere [34]. Thermal DG to graphene was carried out at 1650°C in a helium atmosphere to obtain DG [35]. To prepare HG, direct current arc-discharge of graphite evaporation was carried out in a water cooled stainless steel chamber filled with a mixture of hydrogen and helium with the proportion H₂ (200 Torr)–He (500 Torr) with the discharge current in the 100–150 A range and maximum open circuit voltage of 60 V [37]. Boron doped graphene (B-doped HG) was prepared by carrying out arc-discharge using a boron-stuffed graphite electrode (3 at% boron) in the presence of H₂ (200 Torr) and He (500 Torr). Nitrogen doped graphene (N-doped HG) was prepared by carrying out arc-discharge of graphite electrodes in the presence of H₂ (200 Torr), He (200 Torr) and NH₃ (300 Torr).

The as-synthesised graphene samples were characterised by X-ray diffraction (Cu-K α radiation), transmission electron microscopy (TEM) (JEOL JEM 3010), field emission scanning electron microscopy (FESEM) (Nova Nanosem 600), atomic force microscopy (AFM) (CP 2 atomic force microscope) and Raman spectroscopy (Labraman-HR) using an He–Ne laser (632.81 nm). Brunauer–Emmett–Teller surface areas were measured using a Quantachrome Autosorb-1 instrument. The surface areas were measured at 77 K using N₂ as the adsorbate.

The sensing devices were prepared as follows: 300 nm thick gold film was deposited on a glass substrate by thermal evaporation to make source and drain with a 15 μ m separation between the electrodes. Graphene samples were dispersed in methanol using ultrasonication and 5 μ L of the dispersion was dropped onto the electrodes by dielectrophoresis.

Gas sensing properties were measured using a home-built computer-controlled characterisation system consisting of a test chamber, sensor holder, a Keithley multimeter-2700, a Keithley electrometer-6517A, mass flow controllers and a data acquisition system. The test gas was mixed with N₂ to achieve the desired concentration and the flow rate was maintained using mass flow controllers. By monitoring the output voltage across the sensor, the resistance of the sensor in dry air or in the test gas can be measured. The resistance of the graphene samples increased in contact with NO₂, while the resistance decreased in contact with water and alcohol vapours. The sensitivity (response magnitude) S was determined as the ratio $\Delta R/R_{\text{air}}$, where ΔR is the difference of resistance of the graphene sample in the presence of the test gas and in dry air, R_{air} is the resistance of the samples in dry air. The resistance of the sensors prepared by us based on graphene was in the range 0.1–15 k Ω . The response time is defined as the time required for the resistance to reach 90% of the equilibrium value after the test gas is injected and recovery time is taken as the time necessary for the sensor to attain a resistance 10% above the original value in air. The controlled humidity environments were achieved using saturated aqueous solutions of LiCl, MgCl₂, K₂CO₃, NaBr, KI, NaCl, KCl and K₂SO₄ in a closed glass vessel at an ambient temperature of 25°C which yielded approximately 11.3%, 32.8%, 43.1%, 57.5%, 68.8%, 75.3%, 84.3% and 97.3% relative humidity (RH), respectively. These RH levels were independently monitored by using a hygrometer (Keithley 6517A). Then a Keithley multimeter was used to measure the change in the sensor resistance in the testing circuit. To measure alcohol sensing characteristics of EG sample, N₂ gas was bubbled at a constant flow rate (100 sccm) through a gas bubbler containing different alcohols to get alcohol vapours with alcohol concentration around 200 ppm in the test chamber.

3. Results and discussion

We have characterised the graphene samples by a variety of techniques. Figure 1(a) and (b) show typical transmission electron micrographs (TEM) and Raman spectra of thermally exfoliated graphene (EG) and arc-discharge graphene (HG) samples. The TEM image of EG shows existence for 4–5 layers of graphene while bi- and tri-layer graphenes are mostly present in HG. The Raman spectra show the presence of the D, G and 2D bands in all the samples [36]. The intensity of 2D band is greater in HG than in EG. Analysis of the (002) reflections in the X-ray diffraction patterns of the graphene samples shows that EG and DG samples possess between 3 and 6 graphene layers, while HG, N-doped HG and B-doped HG samples possess between 2 and 3 layers only and that was further verified by AFM cross-section height profile analysis. The BET surface areas of EG and DG were high (1260 m²/g and 930 m²/g, respectively) but that of HG and doped HG samples were rather low (~400 m²/g). Typical low-magnification FESEM images of dielectrophoretically deposited graphene samples (EG and DG), taken at magnifications of 1000 \times and 1500 \times , respectively, between two gold electrodes are shown in Figure 2(a) and (b), respectively. In the inset of Figure 2(a), we show a higher magnification image (20,000 \times) of EG, revealing the sheet-like morphology of graphene.

We have measured the current–voltage (I–V) characteristics for all the graphene samples at 1000 ppm NO₂ and different RH. Figure 3(a) shows the typical Ohmic behaviour of N-doped HG in air and in NO₂. Figure 3(b) shows I–V characteristics of DG

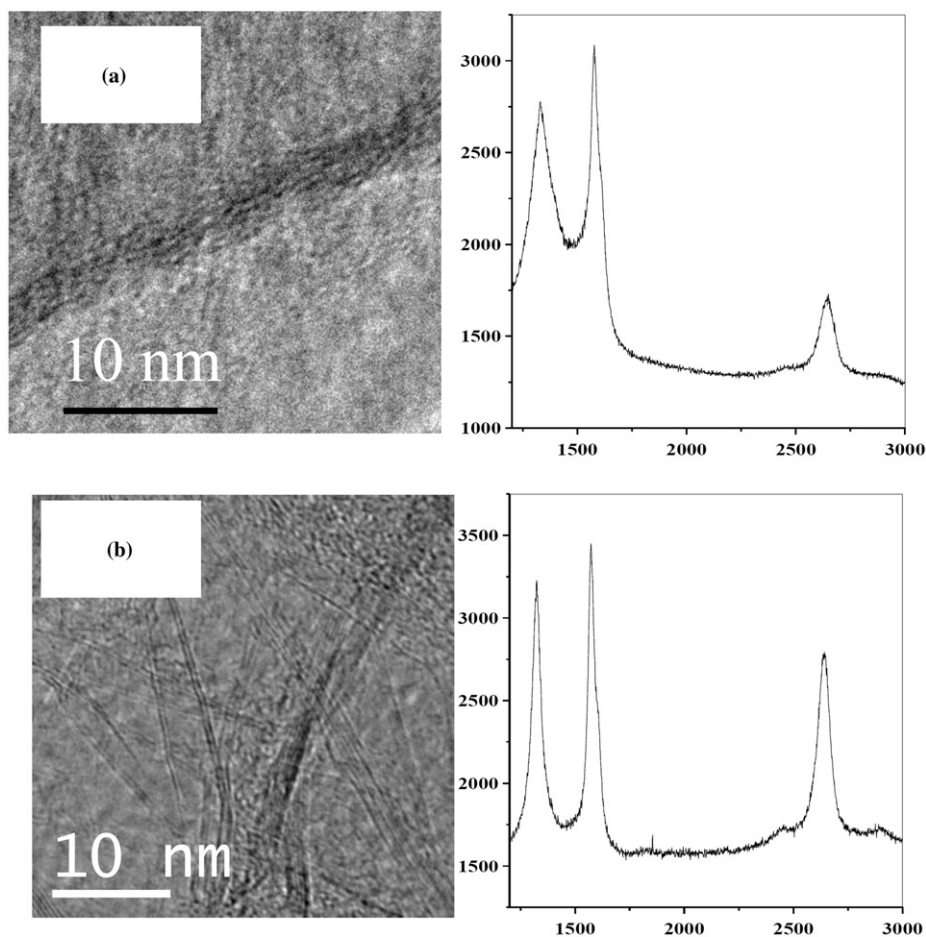


Figure 1. TEM images and Raman spectra of (a) EG and (b) HG samples.

at 4% and 84% RH. These I–V characteristics demonstrate that the graphene samples can be used for sensing these vapours.

Figure 4(a) and (b) show typical gas sensing characteristics of the graphene samples for different concentrations of NO_2 . We find the highest sensitivity with DG, the value reaching 65%. The response time is quite reasonable with both HG and DG, the values being around 15 min, but it is high with EG (~50 min). Rapid response and recovery times are found when the molecular adsorption occurs on low-energy binding sites. The sensing characteristics of graphene for NO_2 are fully reversible on heating the samples to 150°C to remove the adsorbed gases.

We have examined the effect of doping graphene on the NO_2 sensing characteristics of HG prepared by arc-discharge in hydrogen. The sensitivity of HG decreases on boron doping and increases significantly on nitrogen doping. Figure 4(c) shows the sensing characteristics of the N-doped HG sample for different concentrations of NO_2 . It appears that n-type graphene is a better sensor for NO_2 as it is an electron withdrawing molecule.

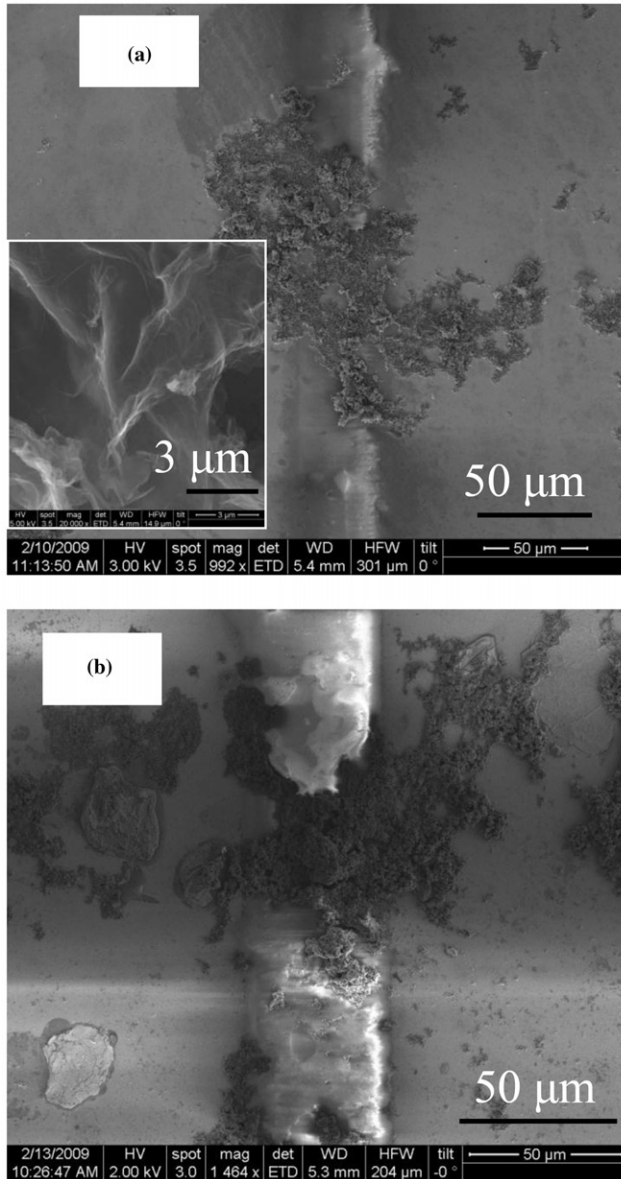


Figure 2. FESEM images of dielectrophoretically deposited (a) EG and (b) DG between two gold electrodes.

The response times with the B- and N-doped HG samples are 15 and 50 min, respectively. In Figure 5(a), we show the variation of sensitivity for the graphene samples exhibiting the highest sensitivity. We see that the value of the sensitivity increases with NO₂ concentration and is satisfactory beyond 100 ppm. We have carried out sensitivity measurements for NO₂ over repeated cycles and obtained reproducible results.

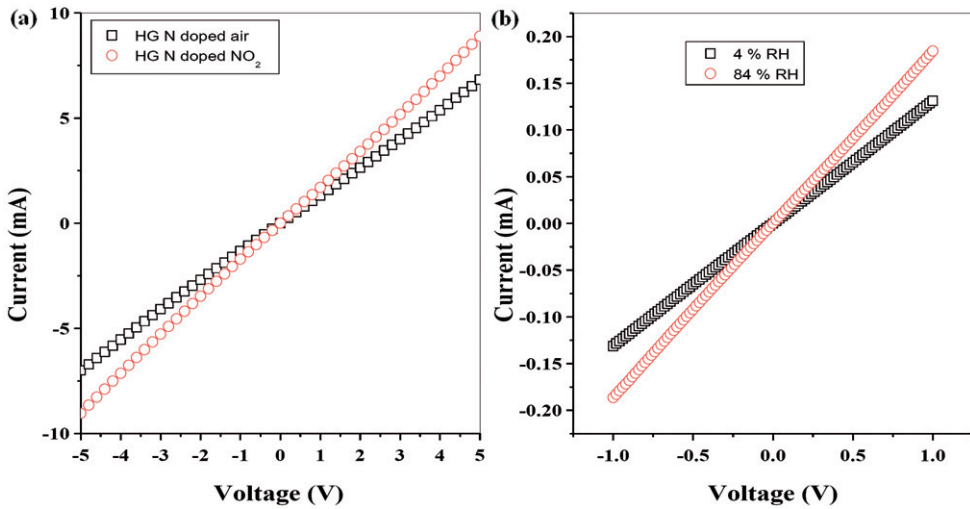


Figure 3. I-V characteristics of (a) N-doped HG (at 25°C) in air and in 1000 ppm of NO₂ and (b) DG (at 25°C) in 4% and 84% RH.

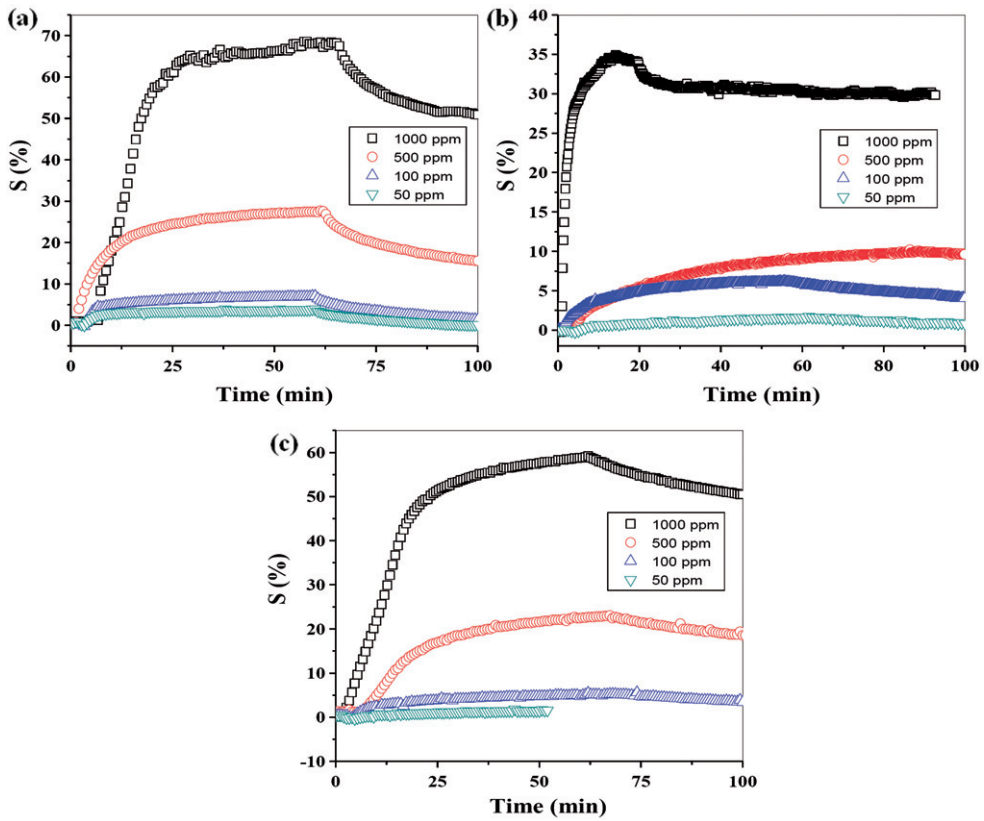


Figure 4. Gas sensing characteristics of (a) DG (b) HG, and (c) N-doped HG for 1000, 500, 100 and 50 ppm of NO₂.

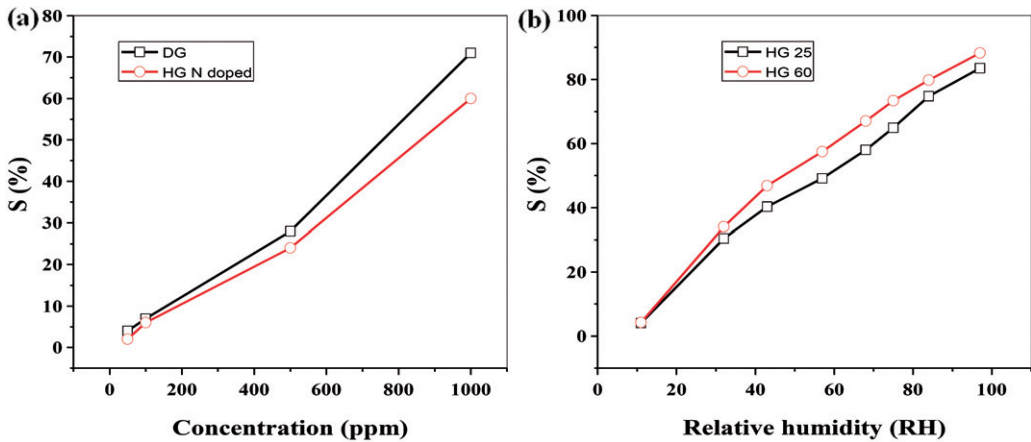


Figure 5. (a) Variation of sensitivity of DG and N-doped HG for NO_2 with the concentration of NO_2 . (b) Variation of sensitivity of HG with RH at 25°C and 60°C .

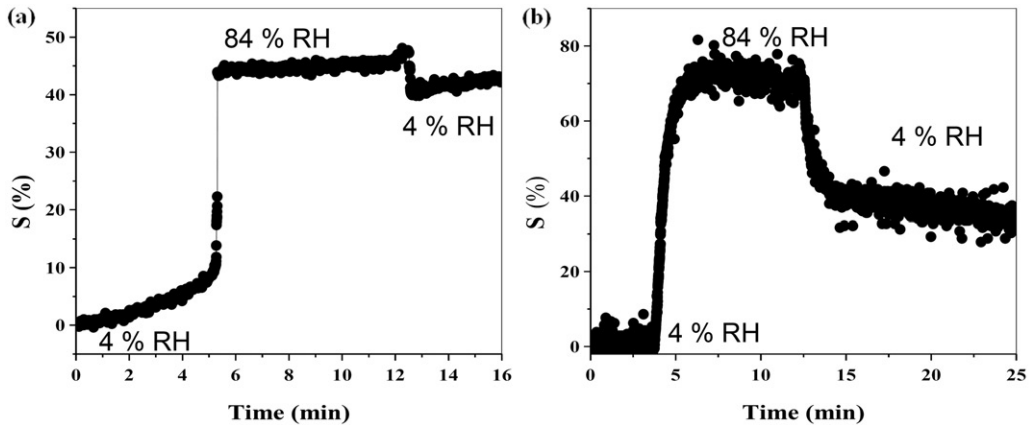


Figure 6. The change in sensitivity of (a) EG and (b) HG accompanying the dynamic switch between dry air (4% RH) and 84% RH.

For practical applications, however, it may be necessary to anneal the sensor-device and remove the absorbed NO_2 after each cycle.

The sensitivity of the three graphene samples for humidity was measured at 25°C and 60°C . Typical sensing characteristics are shown in Figure 6(a) and (b). High sensitivity for humidity is found with HG, the value reaching 80%. The response time varies between 3 and 5 min for the three graphene samples. The first step change in sensitivity is due to the RH change from 4% to 84% and the second step change is due to the RH change from 84 to 4%. The recovery time is too high (a few hours) to show the results in the time scale. In Figure 5(b), we show the typical variation of sensitivity with RH in the case of HG at 25°C and 60°C . The sensitivity increases with % RH as expected and is satisfactory above 20% RH.

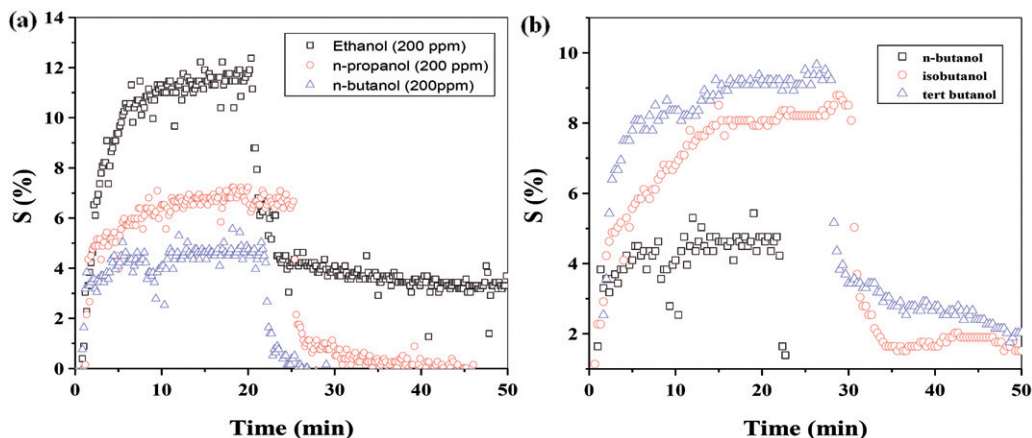


Figure 7. Alcohol sensing characteristics of EG (all alcohols at 200 ppm) at 25°C: (a) methanol, ethanol, n-propanol and n-butanol, (b) n-butanol, iso-butanol and t-butanol.

We have also examined the sensing characteristics of EG for different aliphatic alcohols. In the case of normal aliphatic alcohols, the sensitivity varies with the chain length in the order ethanol > n-propanol > n-butanol, as shown in Figure 7(a). The sensitivity depends on branching in the case of isomeric butyl alcohols with t-butanol > iso-butanol > n-butanol, as shown in Figure 7(b).

4. Conclusions

In conclusion, thick film sensors prepared with few-layer graphene samples show satisfactory sensing characteristics for NO_2 and H_2O . Graphene prepared by nanodiamond conversion shows the best sensitivity for NO_2 although it does not have the highest surface area. It may be because the surface of nanodiamond-converted graphene (DG) is less functionalised compared with EG and HG. N-doped graphene shows enhanced sensitivity for NO_2 since the latter is an electron-withdrawing molecule. HG prepared by arc-discharge in a H_2 atmosphere shows the best sensitivity for humidity. Since water is an electron donor molecule, it appears that HG which has no oxygen functional groups shows the best sensing characteristics. It is interesting that the sensing characteristics of EG for aliphatic alcohols depend on the chain length and branching.

Acknowledgement

The author D.J. Late would like to thank CSIR-COE for the Research Associate fellowship.

References

- [1] J. Watson and K. Ihokura (eds), *Special issue on gas-sensing materials*, MRS Bull. 24 (1999), pp. 14–59.
- [2] P.T. Moseley, *Solid state gas sensors*, Meas. Sci. Technol. 8 (1997), pp. 223–237.

- [3] S. Capone, A. Forleo, L. Francioso, R. Rella, P. Siciliano, J. Spadavecchia, D.S. Presicce, and A.M. Taurino, *Solid-state gas sensors: State of the art and future activities*, J. Optoelectron. Adv. Mater. 5 (2003), pp. 1335–1348.
- [4] C.S. Rout, A. Govindaraj, and C.N.R. Rao, *High-sensitivity hydrocarbon sensors based on tungsten oxide nanowires*, J. Mater. Chem. 16 (2006), pp. 3936–3941.
- [5] C.S. Rout, K. Ganesh, A. Govindaraj, and C.N.R. Rao, *Sensors for the nitrogen oxides, NO₂, NO and N₂O, based on In₂O₃ and WO₃ nanowires*, Appl. Phys. A 85 (2006), pp. 241–246.
- [6] C.S. Rout, M. Hegde, A. Govindaraj, and C.N.R. Rao, *Ammonia sensors based on metal oxide nanostructures*, Nanotechnology 18 (2007), 205504 (1–9).
- [7] D.S. Lee, S.D. Han, J.S. Huh, and D.D. Lee, *Nitrogen oxides-sensing characteristics of WO₃-based nanocrystalline thick film gas sensor*, Sens. Actuators B 60 (1999), pp. 57–63.
- [8] J. Wang, M. Tong, X. Wang, Y. Ma, D. Liu, J. Wu, D. Gao, and G. Du, *Preparation of H₂ and LPG gas sensor*, Sens. Actuators B 84 (2002), pp. 95–97.
- [9] S.H. Wang, T.C. Chou, and C.C. Liu, *Nano-crystalline tungsten oxide NO₂ sensor*, Sens. Actuators B 94 (2003), pp. 343–351.
- [10] D. Zhang, Z. Liu, C. Li, T. Tang, X. Liu, S. Han, B. Lei, and C. Zhou, *Detection of NO₂ down to ppb levels using individual and multiple In₂O₃ nanowire devices*, Nano Lett. 4 (2004), pp. 1919–1924.
- [11] J. Kong, N.R. Franklin, C. Zhou, M.G. Chapline, S. Peng, K. Cho, and H. Dai, *Nanotube molecular wires as chemical sensors*, Science 287 (2000), pp. 622–625.
- [12] E.S. Snow, F.K. Perkins, and J.A. Robinson, *Chemical vapor detection using single-walled carbon nanotubes*, Chem. Soc. Rev. 35 (2006), pp. 790–798.
- [13] J. Li, Y. Lu, Q. Ye, M. Cinke, J. Han, and M. Meyyappan, *Carbon nanotube sensors for gas and organic vapor detection*, Nano Lett. 3 (2003), pp. 929–933.
- [14] S. Chopra, K. McGuire, N. Gothard, and A.M. Rao, *Selective gas detection using a carbon nanotube sensor*, Appl. Phys. Lett. 83 (2003), pp. 2280–2282.
- [15] P.G. Collins, K. Bradley, M. Ishigami, and A. Zettl, *Extreme oxygen sensitivity of electronic properties of carbon nanotubes*, Science 287 (2000), pp. 1801–1804.
- [16] K.S. Novoselov, A.K. Geim, S.V. Morozov, D. Jiang, Y. Zhang, S.V. Dubonos, I.V. Grigorieva, and A.A. Firsov, *Electric field effect in atomically thin carbon films*, Science 306 (2004), pp. 666–669.
- [17] K.S. Novoselov, A.K. Geim, S.V. Morozov, D. Jiang, M.I. Katsnelson, I.V. Grigorieva, S.V. Dubonos, and A.A. Firsov, *Two-dimensional gas of massless Dirac fermions in graphene*, Nature 438 (2005), pp. 197–200.
- [18] C. Berger, Z.M. Song, X.B. Li, X.S. Wu, N. Brown, C. Naud, D. Mayo, T.B. Li, J. Hass, A.N. Marchenkov, E.H. Conrad, P.N. First, and W.A. de Heer, *Electronic confinement and coherence in patterned epitaxial graphene*, Science 312 (2006), pp. 1191–1196.
- [19] K.S. Novoselov, E. McCann, S.V. Morozov, V.I. Falko, M.I. Katsnelson, U. Zeitler, D. Jiang, F. Schedin, and A.K. Geim, *Unconventional quantum Hall effect and Berry's phase of 2π in bilayer graphene*, Nature Phys. 2 (2006), pp. 177–180.
- [20] Y.B. Zhang, J.P. Small, M.E.S. Amori, and P. Kim, *Electric field modulation of Galvanomagnetic properties of mesoscopic graphite*, Phys. Rev. Lett. 94 (2005), 176803.
- [21] M.C. Lemme, T.J. Echtermeyer, M. Baus, and H. Kurz, *A graphene field-effect device*, IEEE Electron Device Lett. 28 (2007), pp. 282–284.
- [22] F. Schedin, A.K. Geim, S.V. Morozov, E.W. Hill, P. Blake, M.I. Katsnelson, and K.S. Novoselov, *Detection of individual gas molecules adsorbed on graphene*, Nature Mater. 6 (2007), pp. 652–655.
- [23] R.S. Sundaram, C.G. Navarro, K. Balasubramanian, M. Burghard, and K. Kern, *Electrochemical Modification of Graphene*, Adv. Mater. 20 (2008), pp. 3050–3053.
- [24] P.K. Ang, W. Chen, A.T.S. Wee, and K.P. Loh, *Solution-gated epitaxial graphene as pH sensor*, J. Am. Chem. Soc. 130 (2008), pp. 14392–14393.

- [25] O. Leenaerts, B. Partoens, and F.M. Peeters, *Adsorption of H₂O, NH₃, CO, NO₂, and NO on graphene: A first-principles study*, *Phys. Rev. B* 77 (2008), 125416 (1–6).
- [26] B. Huang, Z. Li, Z. Liu, G. Zhou, S. Hao, J. Wu, B.L. Gu, and W. Duan, *Adsorption of gas molecules on graphene nanoribbons and its implication for nanoscale molecule sensor*, *J. Phys. Chem. C* 112 (2008), pp. 13442–13446.
- [27] S. Peng and K. Cho, *Ab initio study of doped carbon nanotube sensors*, *Nano Lett.* 3 (2003), pp. 513–517.
- [28] C.S. Yeung, L.V. Liu, and Y.A. Wang, *Adsorption of small gas molecules onto Pt-doped single-walled carbon nanotubes*, *J. Phys. Chem. C* 112 (2008), pp. 7401–7411.
- [29] Z.M. Ao, J. Yang, S. Li, and Q. Jiang, *Enhancement of CO detection in Al doped graphene*, *Chem. Phys. Lett.* 461 (2008), pp. 276–279.
- [30] M. Qazi, T. Vogt, and G. Koley, *Trace gas detection using nanostructured graphite layers*, *Appl. Phys. Lett.* 91 (2007), 233101 (1–3).
- [31] I. Jung, D. Dikin, S. Park, W. Cai, S.L. Mielke, and R.S. Ruoff, *Effect of water vapor on electrical properties of individual reduced graphene oxide sheets*, *J. Phys. Chem. C* 112 (2008), pp. 20264–20268.
- [32] J.T. Robinson, F.K. Perkins, E.S. Snow, Z. Wei, and P.E. Sheehan, *Reduced graphene oxide molecular sensors*, *Nano Lett.* 8 (2008), pp. 3137–3140.
- [33] J.D. Fowler, M.J. Allen, V.C. Tung, Y. Yang, R.B. Kaner, and B.H. Weiller, *Practical chemical sensors from chemically derived graphene*, *ACS Nano* 3 (2009), pp. 301–306.
- [34] H.C. Schniepp, J.L. Li, M.J. McAllister, H. Sai, M. Herrera-Alonso, D.H. Adamson, R.K. Prud'homme, R. Car, D.A. Saville, and I.A. Aksay, *Functionalized single graphene sheets derived from splitting graphite oxide*, *J. Phys. Chem. B* 110 (2006), p. 8535.
- [35] O.E. Andersson, B.L.V. Prasad, H. Sato, T. Enoki, Y. Hishiyama, Y. Kaburagi, M. Yoshikawa, and S. Bandow, *Structure and electronic properties of graphite nanoparticles*, *Phys. Rev. B* 58 (1998), pp. 16387–16395.
- [36] K.S. Subrahmanyam, S.R.C. Vivekchand, A. Govindaraj, and C.N.R. Rao, *A study of graphenes prepared by different methods: Characterization, properties and solubilization*, *J. Mater. Chem.* 18 (2008), pp. 1517–1523.
- [37] K.S. Subrahmanyam, L.S. Panchakarla, A. Govindaraj, and C.N.R. Rao, *Simple method of preparing graphene flakes by an arc-discharge method*, *J. Phys. Chem. C* 113 (2009), pp. 4257–4259.